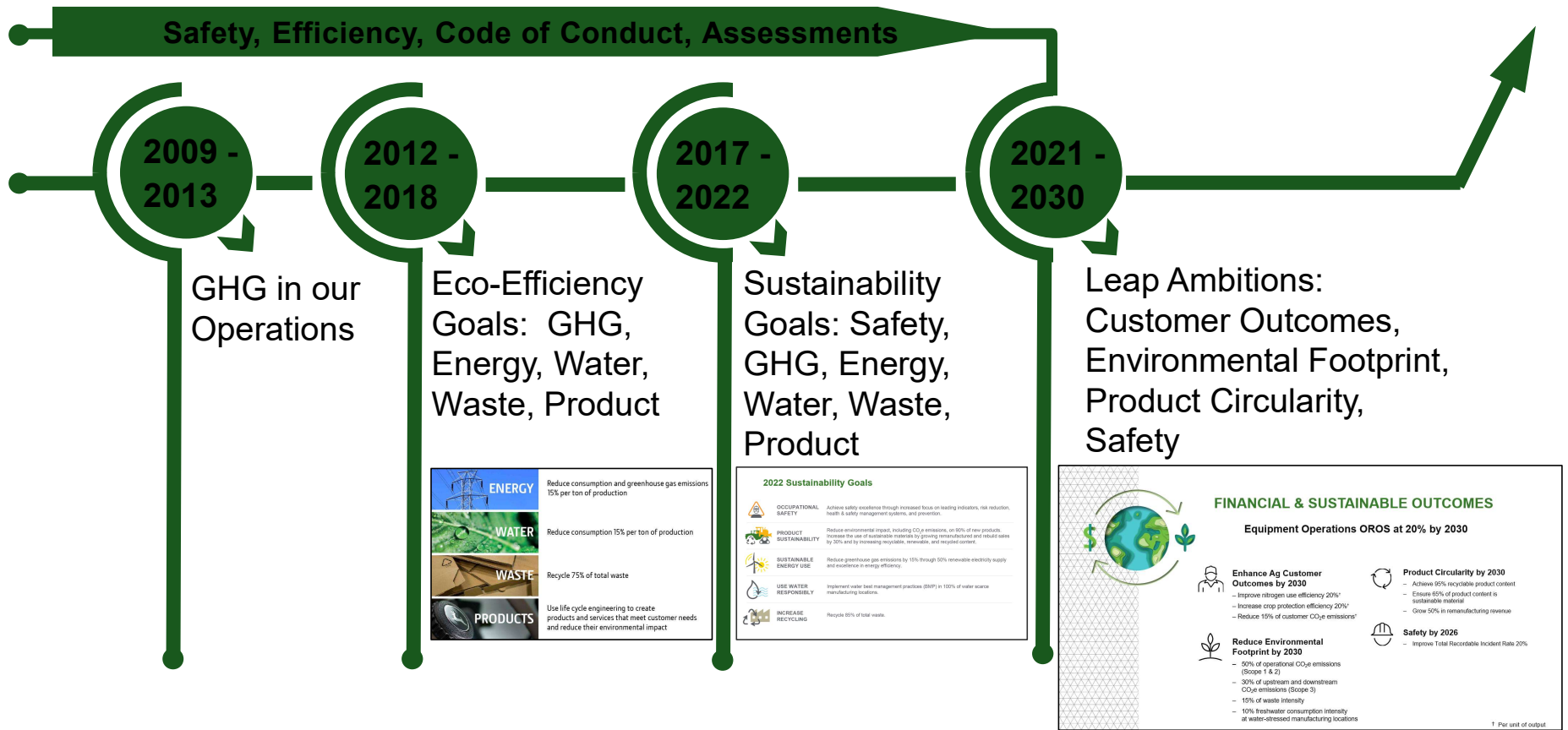


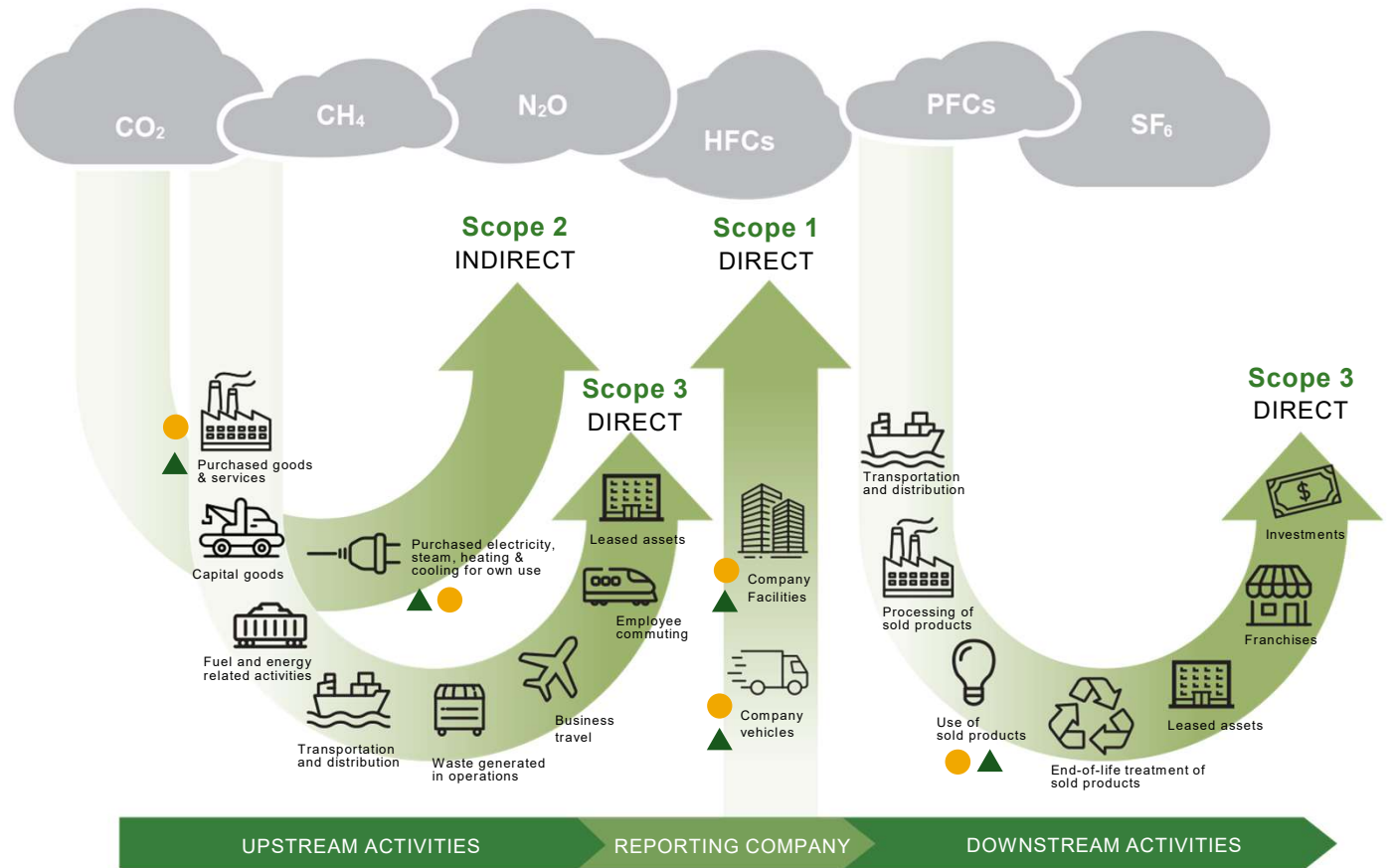
# John Deere Sustainability History

...and public goals



# GHG Scopes & Emissions Across the Value Chain

- measured/ estimated and reported by Deere
- ▲ 2030 goal, or reported



Source: Greenhouse Gas Protocol - Corporate Value Chain (Scope 3) Accounting and Reporting Standard. [https://ghgprotocol.org/sites/default/files/standards/Corporate-Value-Chain-Accounting-Reporting-Standard\\_041613\\_2.pdf](https://ghgprotocol.org/sites/default/files/standards/Corporate-Value-Chain-Accounting-Reporting-Standard_041613_2.pdf)

# Operational Sustainability



## OUR PRIORITIES



**BUILDING UPON THE SUCCESS OF 2022 SUSTAINABILITY GOALS WITH LEAP AMBITIONS**

Making Deere's operations more sustainable by 2030:

- Reducing fresh-water consumption intensity by 10 percent at water-stressed manufacturing locations
- Reducing waste intensity by 15 percent
- Reducing Scope 1 and 2 CO<sub>2</sub>e emissions by 50 percent

## WHAT WE HAVE DONE



**VALIDATED SCIENCE BASED TARGETS FOR SCOPE 1 AND 2 GREENHOUSE GAS EMISSIONS**



**REDUCED SCOPE 1 AND 2 GREENHOUSE GAS EMISSIONS BY NEARLY 29 PERCENT AGAINST A 2017 BASELINE THROUGH NEARLY 59 PERCENT RENEWABLE ELECTRICITY SUPPLY AND ENERGY EFFICIENCY PROJECTS**



**INCREASED WASTE RECYCLED ACROSS DEERE UNITS TO 84 PERCENT**



**IMPLEMENTED WATER BEST MANAGEMENT PRACTICES AT 100 PERCENT OF WATER-SCARCE MANUFACTURING LOCATIONS**



**INTEGRATED BIODIVERSITY INTO FACILITIES AND OUTREACH EFFORTS**

Deere & Company 2022 Sustainability Report [sustainability-report-2022.pdf \(deere.com\)](https://www.deere.com/sustainability-report-2022.pdf)

## LEAP AMBITIONS

JOHN DEERE is uniquely positioned to deliver both **ECONOMIC** and **SUSTAINABLE VALUE** for our customers through **ADVANCED TECHNOLOGY** and **SOLUTIONS**.



INCREMENTAL ADDRESSABLE  
MARKET OPPORTUNITY

> \$150  
BILLION USD



### PRODUCTION & PRECISION AG

- By 2026**
- Reach 500 million engaged acres\* with 50% highly engaged\*\*
- By 2030**
- Ensure 75% of engaged acres are sustainably engaged acres\*\*\*



### SMALL AG & TURF

- By 2026**
- Ensure 100% of new Small Ag equipment is connectivity enabled
  - Offer an electric option in each Turf and Compact Utility Tractor product family
  - Deliver a fully autonomous, battery-powered electric ag tractor to the market



### CONSTRUCTION & FORESTRY

- By 2026**
- Deliver 20+ electric and hybrid-electric product models
  - Earthmoving: Increase Grade Management adoption to 50%
  - Forestry: Boost Intelligent Boom Control adoption to 100%
  - Roadbuilding: Increase Precision Roadbuilding Solutions adoption to 85%

DELIVER ONGOING  
VALUE TO CUSTOMERS  
IN ALL THREE  
BUSINESS SEGMENTS

Connect **1.5 million** machines by 2026  
Demonstrate viable **low/no carbon** alternative power solutions by 2026  
Deliver and scale **Solutions as a Service** business model by 2030

## FINANCIAL AND SUSTAINABLE OUTCOMES



### Financial Outcomes by 2030

- Expand Equipment Operations OROS to 20%
- Grow enterprise recurring revenue to 10%



### Product Circularity by 2030

- Achieve 95% recyclable product content
- Ensure 65% of product content is sustainable material
- Grow 50% in remanufacturing revenue



### Enhance Ag Customer Outcomes by 2030

- Improve nitrogen use efficiency 20%<sup>1</sup>
- Increase crop protection efficiency 20%<sup>1</sup>
- Reduce 15% of customer CO<sub>2</sub>e emissions<sup>1</sup>



### Safety by 2026

- Improve Total Recordable Incident Rate 20%



### Reduce Environmental Footprint by 2030

- 50% of operational CO<sub>2</sub>e emissions (Scope 1 & 2)
- 30% of upstream and downstream CO<sub>2</sub>e emissions (Scope 3)
- 15% of waste intensity
- 10% freshwater consumption intensity at water-stressed manufacturing locations

\* Engaged acres is one of the foundational measures of customers' use of the John Deere Operations Center™ (our online farm management system). It reflects the number of unique acres with at least one operation pass documented in the Operations Center in the past 12 months.

\*\* Highly Engaged Acres include documentation of multiple production steps and the use of digital tools to complete multiple, value creating activities over a 12-month period.

\*\*\* Sustainably engaged acres include incorporation of two or more sustainable John Deere technology solutions or sustainable practices over a 12-month period.

<sup>1</sup>Per unit of output.

Deere & Company 2023 Business Impact Report [business-impact-report-2023.pdf \(deere.com\)](https://www.deere.com/business-impact-report-2023.pdf)